

# BMZ Connect C

USER MANUAL



### IDENTIFICATION

#### PRODUCT

Smartphone Application for BMZ Connect C

#### MANUFACTURER

BMZ Batterien-Montage-Zentrum GmbH  
Am Sportplatz 28  
63791 Karlstein  
Germany

Phone: +49 6188 9956-0

Fax: +49 6188 9956-900

E-Mail: [kontakt@bmz-group.com](mailto:kontakt@bmz-group.com)

Web: [www.bmz-group.com](http://www.bmz-group.com)

#### CUSTOMER SERVICE

BMZ Service Center  
Am Sportplatz 15-17  
63791 Karlstein am Main  
Germany

Phone: +49 6188 9956-9833

Fax: +49 6188 9956-699

E-Mail: [cs.ebike@bmz-group.com](mailto:cs.ebike@bmz-group.com)

Web: [www.bmz-central-service.com](http://www.bmz-central-service.com)

#### DOCUMENT

User Manual BMZ Connect C

Version: 0.1

Last change: 12.02.2019

Subject to change.

## CONTENTS

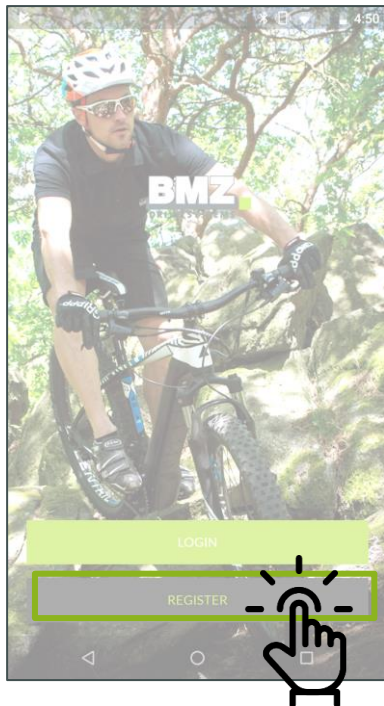
<b>1</b>	<b>Log-in</b>	<b>5</b>
1.1	Register a new account	5
1.2	Log-in with existing account	5
<b>2</b>	<b>Side Menu</b>	<b>6</b>
2.1	Map	7
2.1.1	Features	7
2.1.2	Set display in circle	7
2.2	Dashboard	7
2.2.1	Access the dashboard	7
2.2.2	Customize data shown per slider	7
2.2.3	Available data	8
2.3	ACtivity Feed	8
2.3.1	Overview	8
2.3.2	Detailed view	9
2.4	Vehicle	9
2.4.1	Change vehicle information	9
2.4.2	Customize each assist level	10
2.5	Settings	10
2.5.1	Setting Options	10
2.5.2	Delete account	10
<b>3</b>	<b>Troubleshooting</b>	<b>11</b>
3.1	App does not show Bike Data	11
3.2	Cannot find vehicle's Bluetooth	11



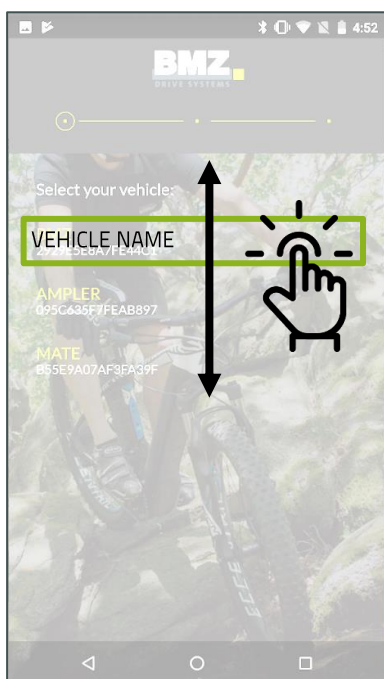
# 1 LOG-IN

## 1.1 REGISTER A NEW ACCOUNT

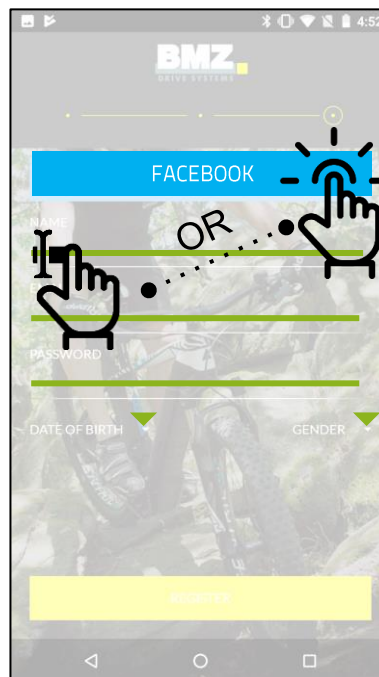
1. Tap REGISTER.  
⇒ App loads list of detected vehicles.



2. Select your vehicle.



3. Use your Facebook account to complete registration OR fill in the required fields.



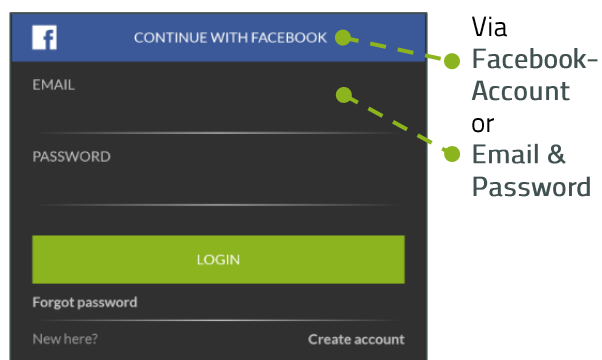
### NOTE

Ensure Bluetooth is switched on during this process.

If problems occur, see [Troubleshooting](#)  
Cannot find vehicle's Bluetooth

## 1.2 LOG-IN WITH EXISTING ACCOUNT

Choose option.



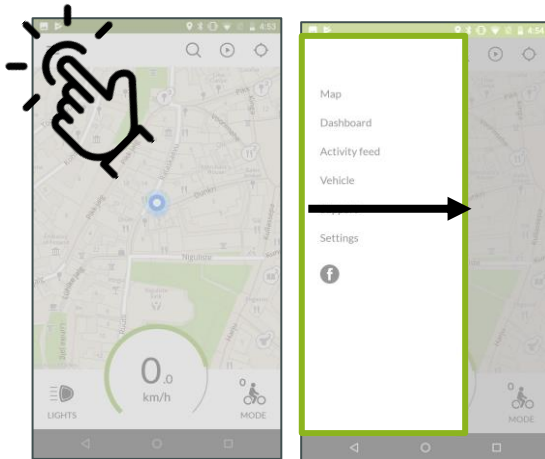
### FORGOT PASSWORD?

1. Enter your email to receive a PIN code.
2. Enter PIN code.
3. Set new password.

## 2 SIDE MENU

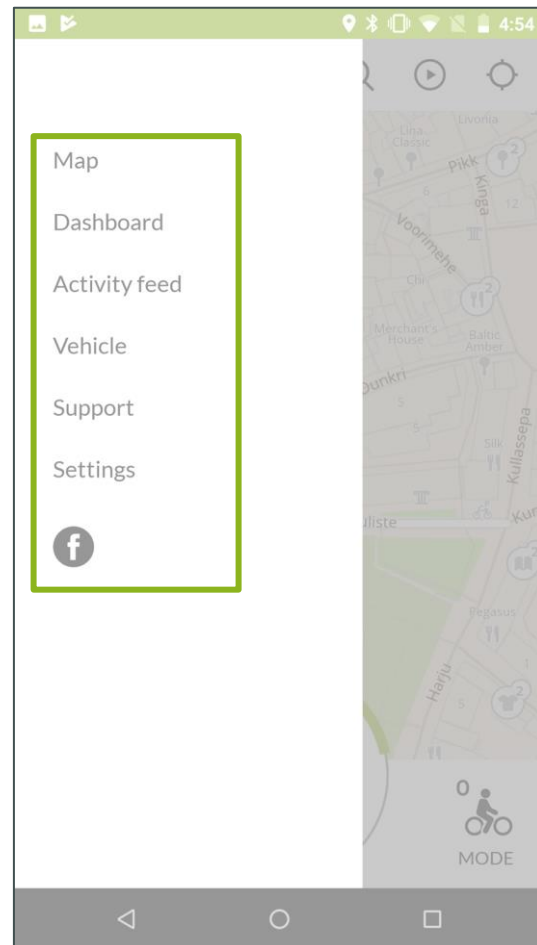
### ACCESS THE SIDE MENU

- Tap on the symbol ≡ on the top left corner.
- ⇒ The side menu opens.



### DESCRIPTION

1. **Map:** Map view is the standard view. It shows your current location.
2. **Dashboard:** Dashboard view shows different bike related information like speed, cadence, state of charge, motor temperature etc.
3. **Activity feed:** Shows information about your own saved rides, the saved rides of your Facebook friends and manufacturer notifications.
4. **Vehicle:** Via Vehicle menu it is possible to change thrust settings of your bike's assist levels.
5. **Support:** Under support you can find FAQs and the BMZ support contact.
6. **Settings:** Settings menu is for controlling your profile and App settings.
7. **f:** Social Media links



## 2.1 MAP

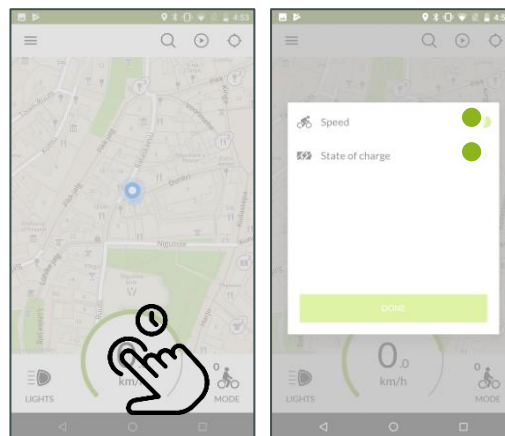
### 2.1.1 FEATURES



- A Menu
- B Speed or State of charge
- C Lights on/off
- D Destination search bar
- E Record trip
- F Current location
- G State of charge indicator
- H Assist mode

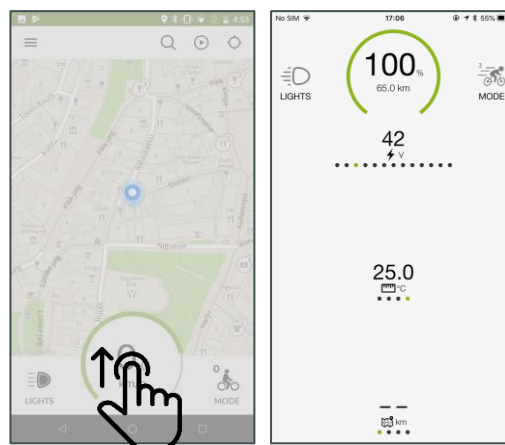
### 2.1.2 SET DISPLAY IN CIRCLE

1. Long-tap within the circle to pop up the box.
2. Select which value to show.



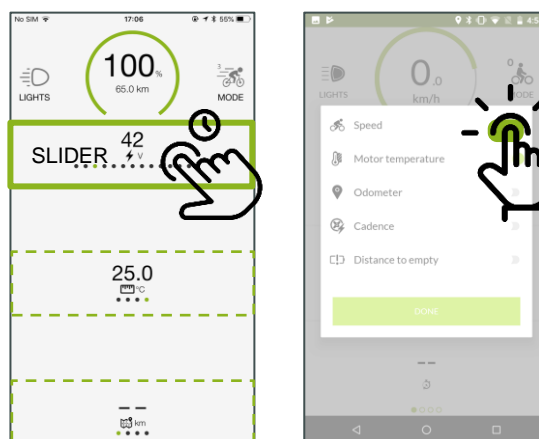
## 2.2 DASHBOARD

### 2.2.1 ACCESS THE DASHBOARD



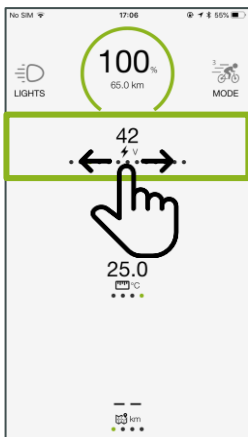
1. Open the dashboard by sliding up the circle.
2. On the Dashboard it is possible to check bike and navigation related data.

### 2.2.2 CUSTOMIZE DATA SHOWN PER SLIDER



1. Tap sub menu.
2. Tap button to hide or show data.





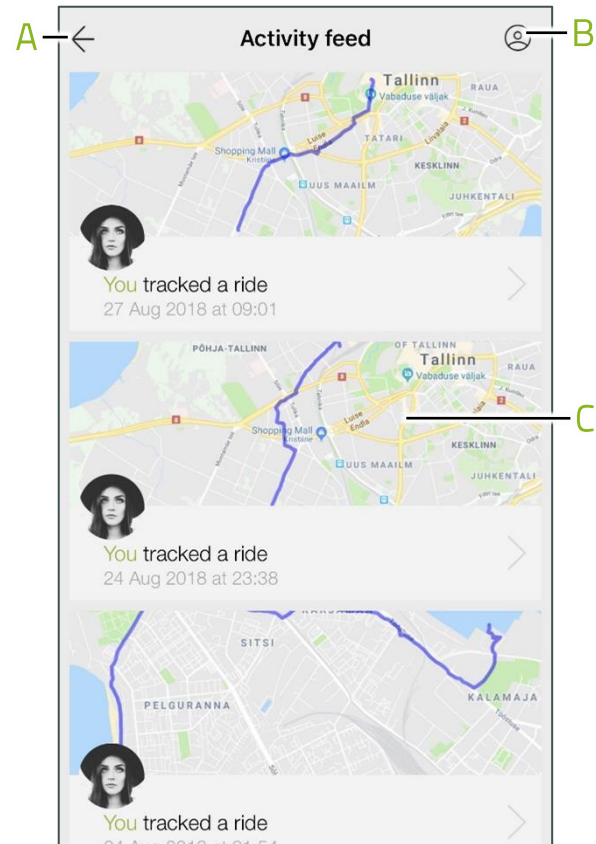
3. View the selected data by sliding left or right on the selected field.

### 2.2.3 AVAILABLE DATA

Data	Description
Speed	Bike speed measured by speed sensor
Voltage	Voltage of traction battery
Battery temperature	Temperature of the traction battery
State of charge	State of charge of the traction battery
Distance to empty	Calculated range until battery is depleted
Distance to destination	Distance to navigation destination
Estimated time of arrival	Estimated time of arrival at navigation destination
Trip duration	Duration of the current trip
Trip distance	Distance of the current trip
Cadence	Speed of pedalling in revolutions per minute
Odometer	Total bike mileage

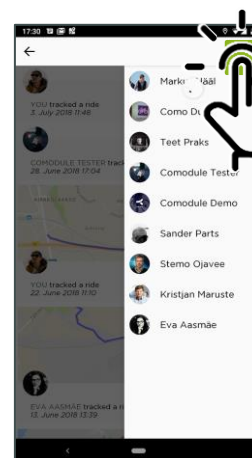
## 2.3 ACTIVITY FEED

### 2.3.1 OVERVIEW



- A Back
- B Facebook friends
- C Type of feed
  - Own recorded rides
  - Facebook friend's rides
  - Messages from ...

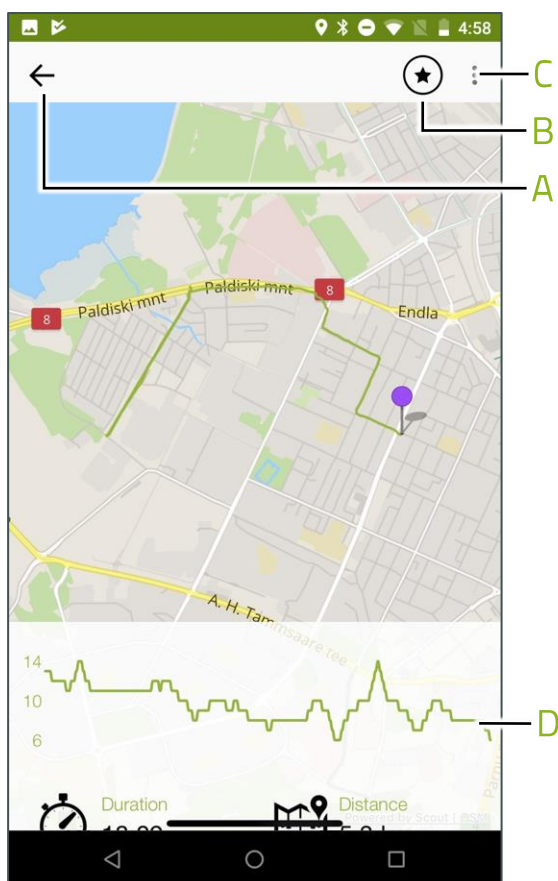
### FACEBOOK FRIENDS USING CONNECT C



Tap the profile symbol in Activity feed to see who of your Facebook friends is using the BMZ Connect C App.

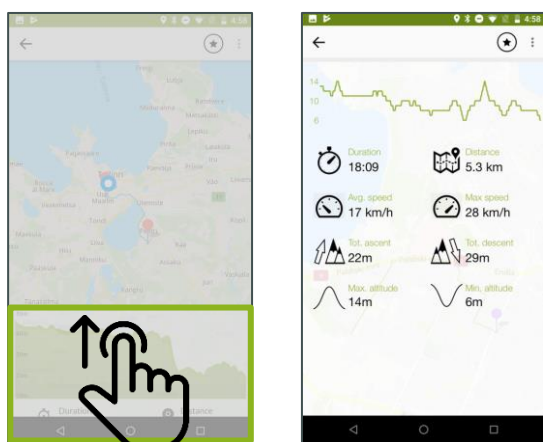


## 2.3.2 DETAILED VIEW



- A Back
- B Favorite: Tap the star to like your friend's trip.
- C More: Open menu point to delete the trip data.
- D Interactive line graph: drag along for details
  - Shows speed, state of charge and elevation for current track point
  - Start / Destination

## STATS OVERVIEW FOR ENTIRE RIDE



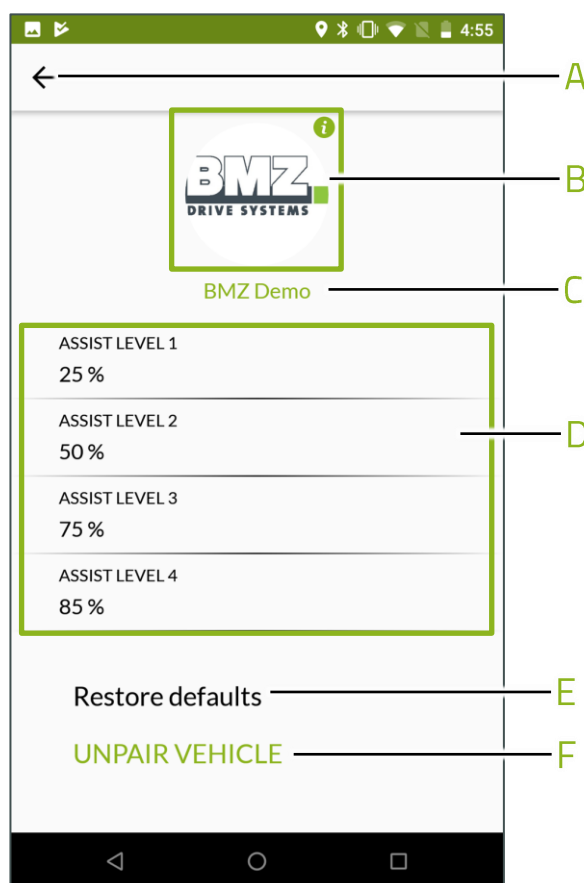
Swipe up the graph to see general data for the saved ride.

## NOTE

All recorded statistics are shown here, even if they are set to "off" on the dashboard screen. The on-off states only affect the states shown on the dashboard.

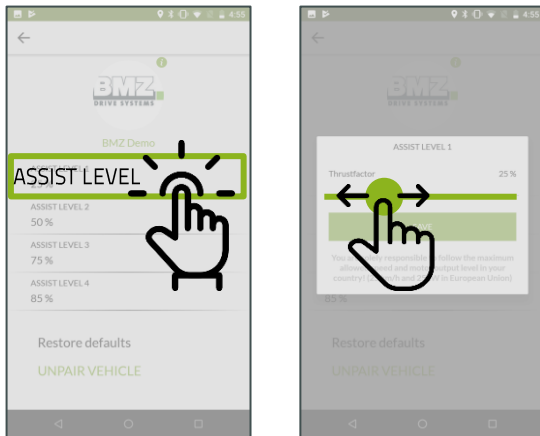
## 2.4 VEHICLE

### 2.4.1 CHANGE VEHICLE INFORMATION

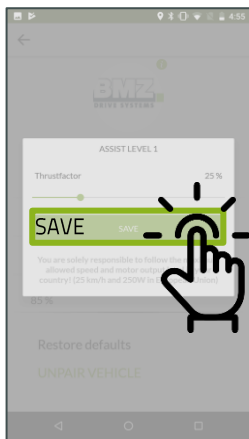


- A Back
- B Vehicle Info (contains vehicle name, vehicle photo and module id data)
- C Vehicle name (User can change the name by clicking on the Picture above)
- D Assist Level: Shows thrust settings for each assist level (configurable)
- E Restore assist levels to original values.
- F Unpair to select another vehicle to pair to

### 2.4.2 CUSTOMIZE EACH ASSIST LEVEL



1. Tap ASSIST LEVEL.
2. Adjust thrust setting for particular assist level.



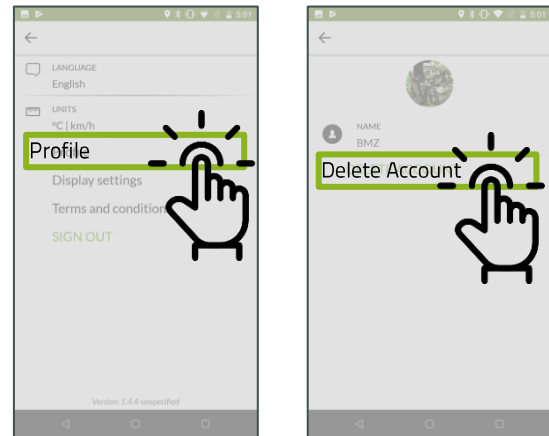
3. Tap SAVE to confirm.

## 2.5 SETTINGS

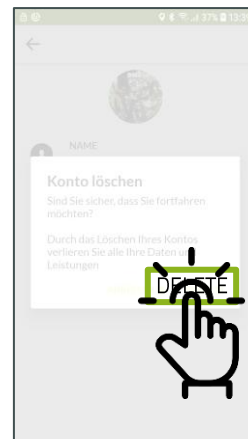
### 2.5.1 SETTING OPTIONS

Setting	Options
Language	English, German
Units	Metric system, U.S. Imperial system
Profile	Photo, Name, Delete account
Display	Color Scheme: Dark, Bright, Automatic (only of location is switches on)
	Keep screen on: Never, While navigating or recording a trip, Always

### 2.5.2 DELETE ACCOUNT



1. Tap "Profile".
2. Tap "Delete Account".



3. Tap "Delete" to confirm.

## 3 TROUBLESHOOTING

### 3.1 APP DOES NOT SHOW BIKE DATA

App cannot connect although the bike is paired.

1. Make sure your bike is powered up.
2. Check "Vehicle" menu to make sure to be paired with the bike.
3. If you are paired to the bike but cannot connect to receive bike data:  
Close the App (swipe it away from the screen) and open it again.
4. If 3 does not help, go to "Vehicle" menu and unpair bike. Pair Bike again.
5. If there is still no connection to a vehicle:
  - ⇒ Unpair the vehicle
  - ⇒ Close the app
  - ⇒ Go to phone settings and choose Bluetooth. Remove your vehicle from the list of connected devices.
  - ⇒ Restart the app and try to pair again.
6. If none the above works contact the support (Side menu > Support > Contact).

### 3.2 CANNOT FIND VEHICLE'S BLUETOOTH

1. Make sure the bike is turned on. If you cannot find the bike from available Bluetooth devices restart the bike.
2. If your bike does not appear in the list of available Bluetooth devices make sure nobody else (or any other phone) is paired with the bike. Only one phone can be paired to a bike at a time.
3. If none the above works contact the support (Side menu > Support > Contact).

**BMZ GmbH**

Am Sportplatz 28  
63791 Karlstein am Main  
Germany

Phone +49 61 88-9956-0  
Fax +49 61 88-9956-900  
[kontakt@bmz-group.com](mailto:kontakt@bmz-group.com)

**Web**

[www.bmz-group.com](http://www.bmz-group.com)

**Service**

[centralservice@bmz-group.com](mailto:centralservice@bmz-group.com)

**BMZ Company Ltd.**

2nd Building, NO.2 Jinlong Street  
Baolong Industry Zone, Longgang  
518116 Shenzhen  
China

Phone +86 755 89775-800  
Fax +86 755 89775-900  
[sales@bmz-group.com](mailto:sales@bmz-group.com)

**BMZ USA Inc.**

2656 Lishelle Place  
Virginia Beach, VA 23452  
USA

Phone +1 757 821-8494  
Fax +1 757 821-8499  
[bmz-usa@bmz-group.com](mailto:bmz-usa@bmz-group.com)

**BMZ Poland Sp. z o.o.**

Alberta Einsteina 9  
PL-44-109 Gliwice  
Poland

Phone +48 32 7842-450  
Fax +48 32 7842-451  
[biuro@bmz-group.com](mailto:biuro@bmz-group.com)

**BMZ France S.A.R.L.**

153, Boulevard Haussmann  
75008 Paris  
France

Phone +33 6 84 52 76 29  
[jean-marc.brunet@bmz-group.com](mailto:jean-marc.brunet@bmz-group.com)